



# DRYDEN

**GOLD CORP**

## **High-grade Exploration Plan Summer 2024**

**TSXV: DRY | OTCQB: DRYGF**  
**WWW.DRYDENGOLD.COM**

**AUGUST 2024**

# Acknowledgements & Forward-Looking Statements

***Dryden Gold Corp acknowledges all Indigenous Peoples and that it is operating on the traditional homelands of the Wabigoon Lake Ojibway Nation and Eagle Lake First Nation.***

*Certain statements contained herein constitute “forward-looking statements” within the meaning of the applicable Canadian securities legislation. These forward-looking statements are based on current expectations, estimates and projections about the Canadian mining and mineral exploration industry based on management’s beliefs and certain assumptions made by management. Readers are cautioned that such forward-looking statements are not guarantees of future performance and are subject to risks, uncertainties and assumptions that are difficult to predict and the actual results and performance of Dryden Gold Corp. (the “Company”) may differ materially from the results implied by such statements. Readers are cautioned not to place undue reliance on any forward-looking statements. Unless otherwise required by law, the Company also disclaims any obligation to update its view of any such risks or uncertainties or to announce publicly the result of any revisions to the forward-looking statements made here.*

*This document contains proprietary information that is the property of Dryden Gold Corp. Neither this document, nor the proprietary information contained herein, shall be published, reproduced, copied, disclosed or used for any other purpose, other than the review and consideration of this document.*

*This presentation is not an offer, nor the solicitation of an offer to buy any securities. Such an offer, if made, will be made only through a prospectus or other such document issued in accordance with applicable securities laws, and other applicable laws, rules and regulations., Or pursuant to the applicable exemption from the requirement to deliver a prospectus, in accordance with applicable laws.*

*Historical statements contained in this document regarding past activities should not be taken as a representation that such trends or activities will continue in the future. In particular, historical results should not be taken as a representation that such trends will be replicated in the future. No statement in this document is intended to be nor may be construed as a profit forecast.*

*An investment in the Company is speculative and involves substantial risk and is only suitable for investors that understand the potential consequences and are able to bear the risk of losing their entire investment. Investors should consult with their own legal, tax and financial advisors with respect to all such risks before making an investment.*

*The Company is in the early stage of development and has a limited operational history, making it difficult to accurately predict business operations. The Company has limited resources and may run out of capital prior to becoming profitable. The Company may fail and investors may lose their entire investment.*

*The technical disclosure in this presentation has been approved by Maura J. Kolb, M.Sc., P.Geo. a Qualified Person as defined by National Instrument 43-101 of the Canadian Securities Administrators.*

**DRYDEN**  
GOLD CORP

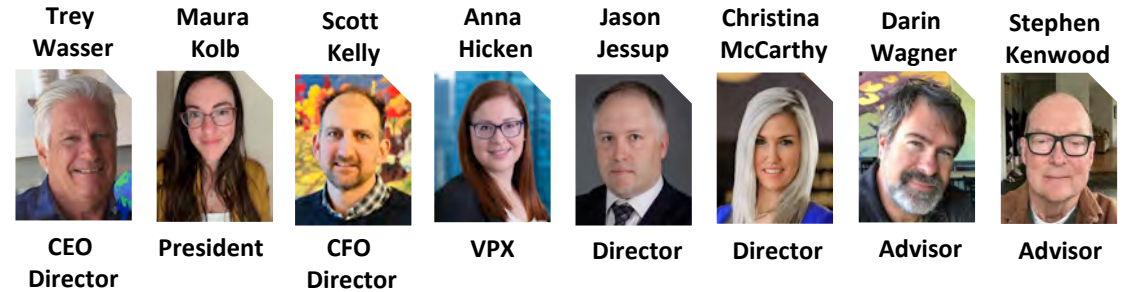


# What Sets us Apart



## Experienced Management

**Experienced Management & Board of Directors**  
**Strong track record** building shareholder value and M&A  
**Extensive regional experience & discoveries**



## Strategic Land Position



**Dominant strategic land**  
**Multiple high-grade gold hits**  
**Brownfields opportunity**  
**Great Geological setting**  
**Excellent infrastructure**  
**Favourable mining jurisdiction**

## Investment Upside



**Consolidated land package**  
**Positioned for M&A activity**  
**Great shareholder base:** Rob McEwen, Eric Sprott, Delbrook Capital and EuroPac Gold Fund



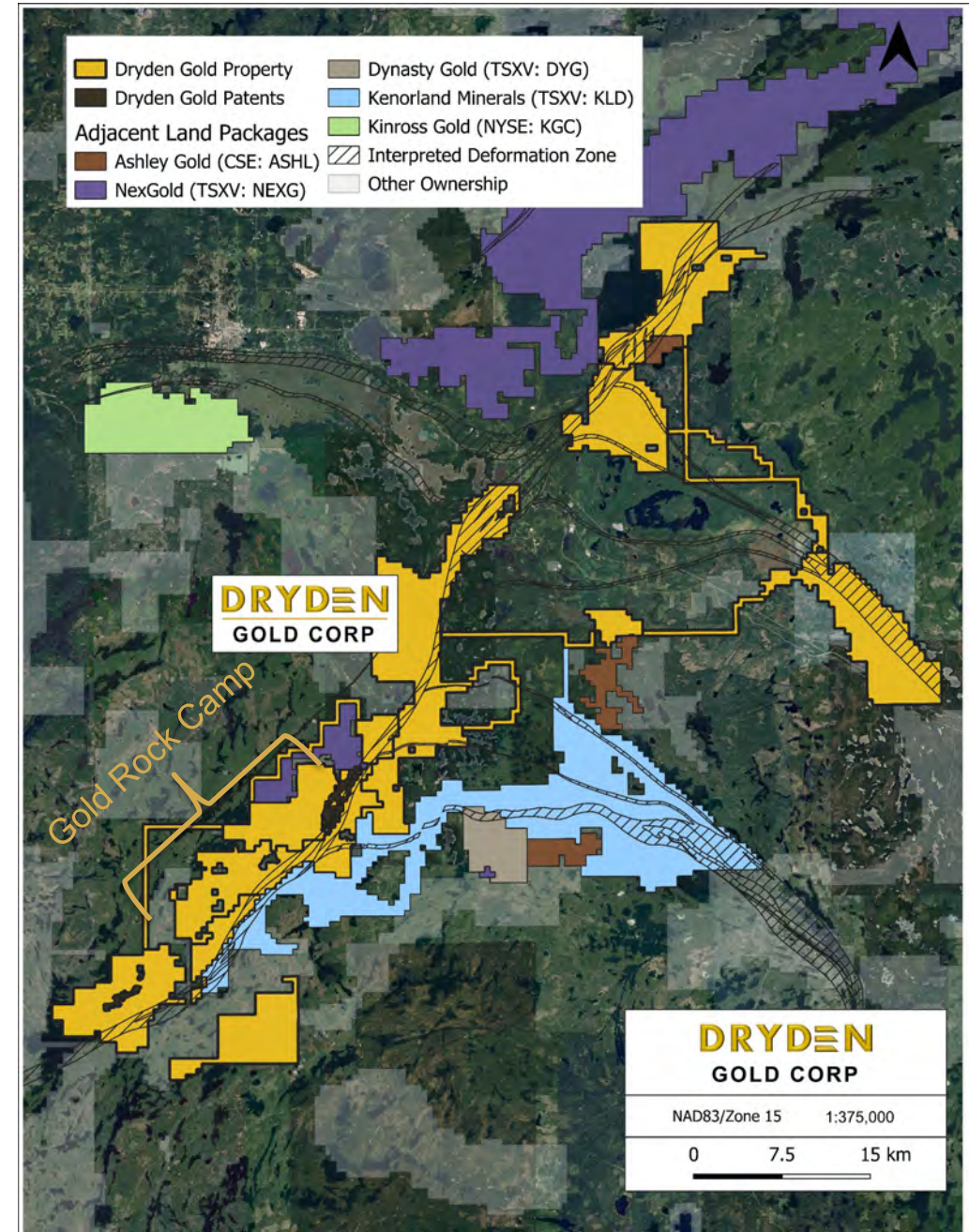
(1) Subject to 36-month escrow.

As at July 22, 2024

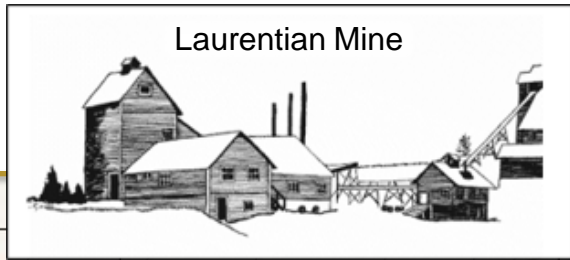
Trading Symbols	TSXV: <b>DRY</b> OTCQB: <b>DRYGF</b>
Current Issued and Outstanding	93,887,461
Warrants Outstanding (42,024,395 @\$0.30) Expire December 27, 2025	42,024,395
ESOP Options Outstanding	<u>5,600,000</u>
Fully Diluted	141,511,856
Cash Balance	\$1,300,000

# Strategic Land Package

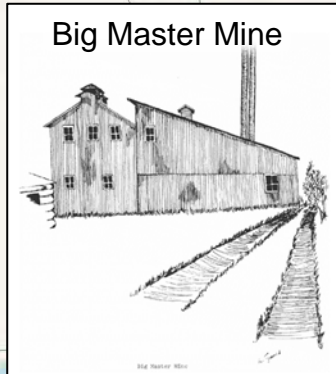
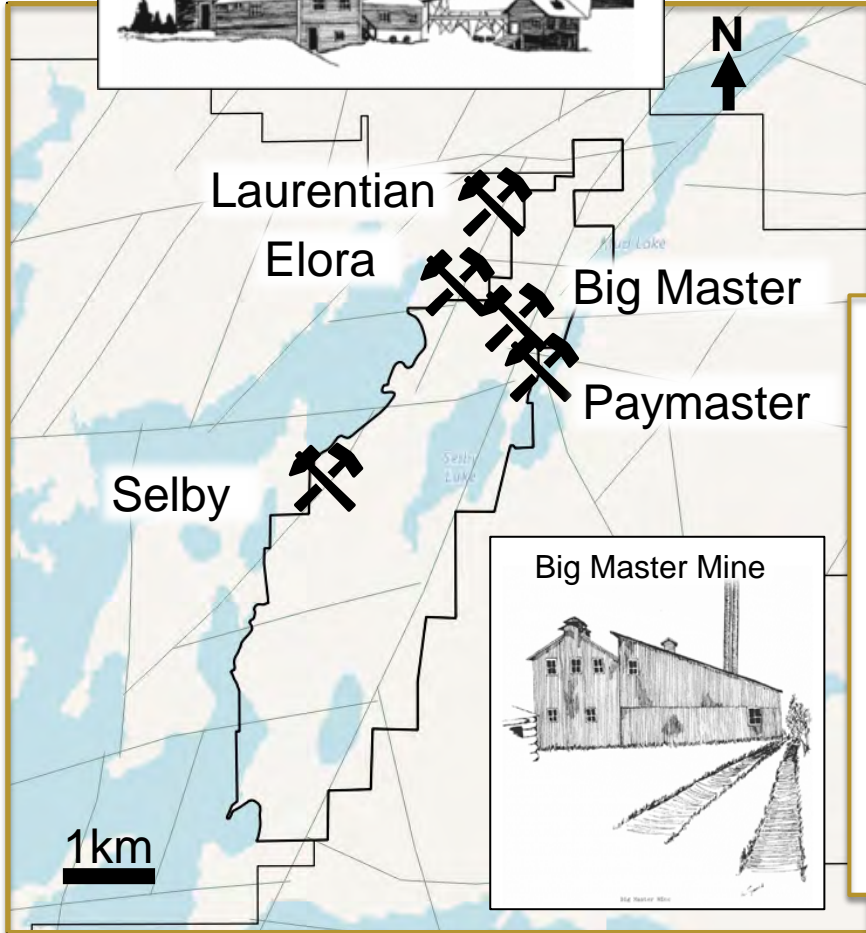
- ▲ Over 600 km<sup>2</sup> (60,000 hectares) consolidated by Dryden Gold Corp.
- ▲ Excellent infrastructure – Roads (Trans-Canada Hwy), power & labour
- ▲ 50 km covering regional gold bearing MDdz structure (Manitou-Dinorwic deformation zone)
- ▲ **Kinross, NexGold Mining (Treasury Metals), Kenorland Minerals and Dynasty Gold** active in the Dryden Gold District
- ▲ **NexGold Mining** has defined a **3M ounce** low-grade resource in the Dryden Gold District
- ▲ Limited exploration - only **33,200 meters** of **historic** drilling district-wide at shallow depths
- ▲ **Brownfield** opportunity in the **Gold Rock Camp**
- ▲ Recently acquired the fully permitted **Cross River** property that hosts several cross-cutting east-west structures are interpreted to potentially be upgrading structures in the system.



# Prolific Gold Region | Dryden Gold District

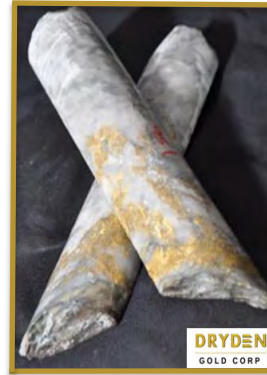


Laurentian Mine



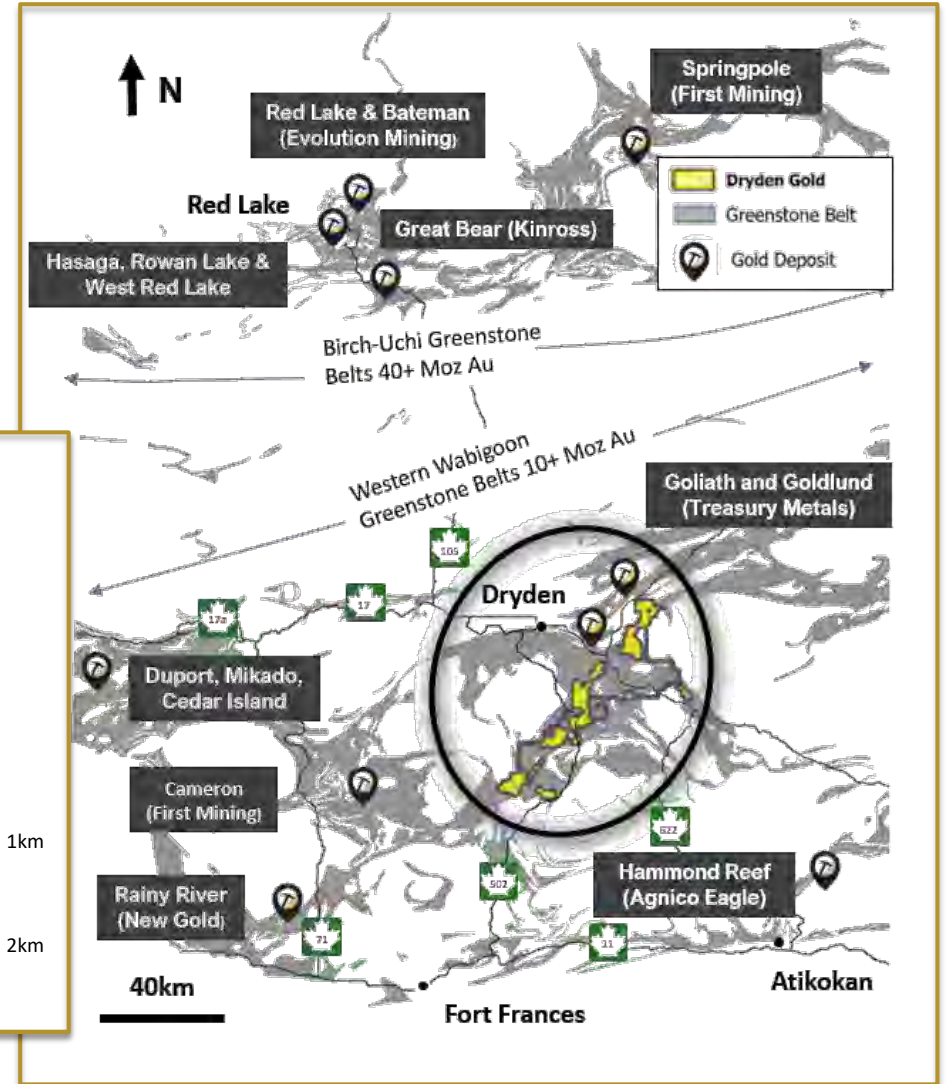
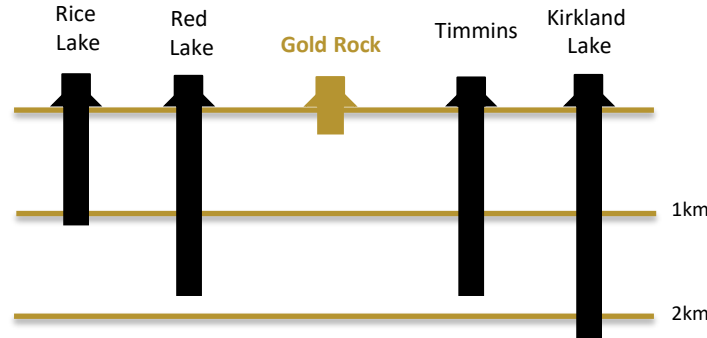
Big Master Mine

Gold Rock  
8.5m @ 3,497.0 g/t Au  
including  
0.55m @ 53,700 g/t Au



DRYDEN GOLD CORP

Archean Lode Gold Mines Camps  
Central Canada



# Three Projects | Potential for High-Grade Gold Discovery

## OUR EXPLORATION FOCUS FOR 2024

### ① Gold Rock Camp Drill Intercept Highlights:

- ▲ Kenwest Patents – 3,497.0 g/t gold over 8.5 meters including 53,700 g/t gold over 0.55 meters
- ▲ Kenwest Patents – 15.4 g/t gold over 6.1 meters
- ▲ 502 Vein – 12.7 g/t gold over 4.0 meters
- ▲ Canamerica – 12.6 g/t gold over 4.0 meters
- ▲ Cross River Historic Queen Alexandra Mine (0.94 opt)

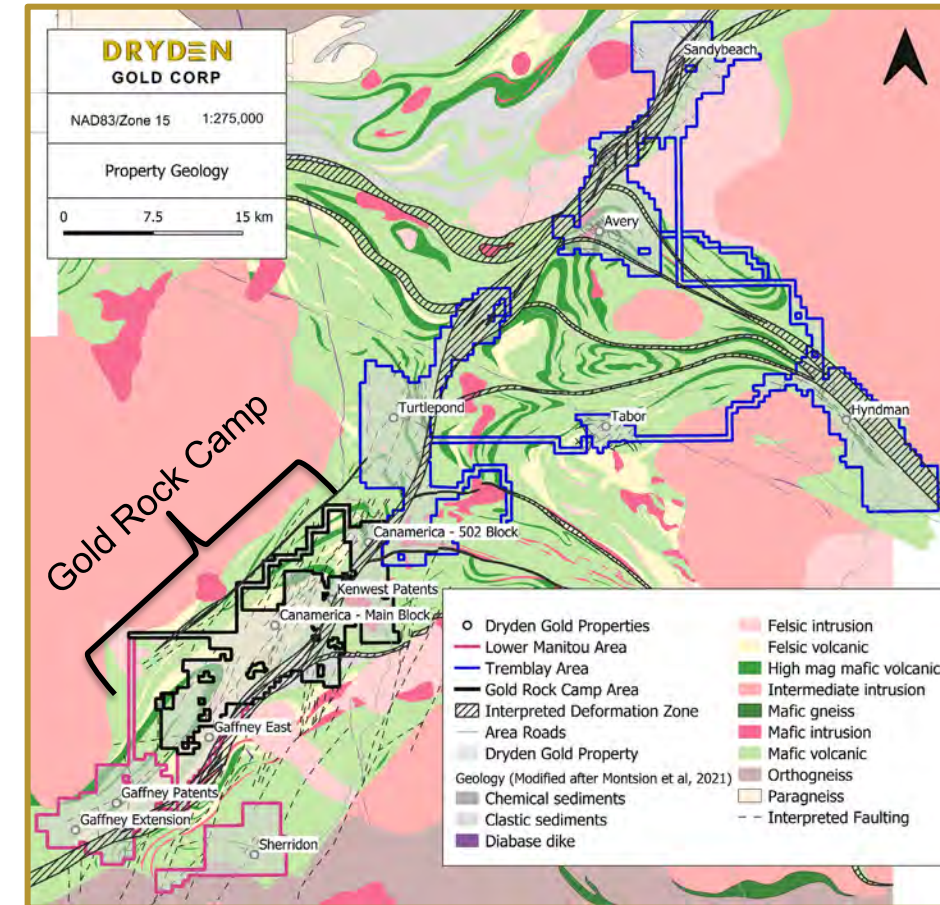


### ② Lower Manitou Drill Intercept Highlights:

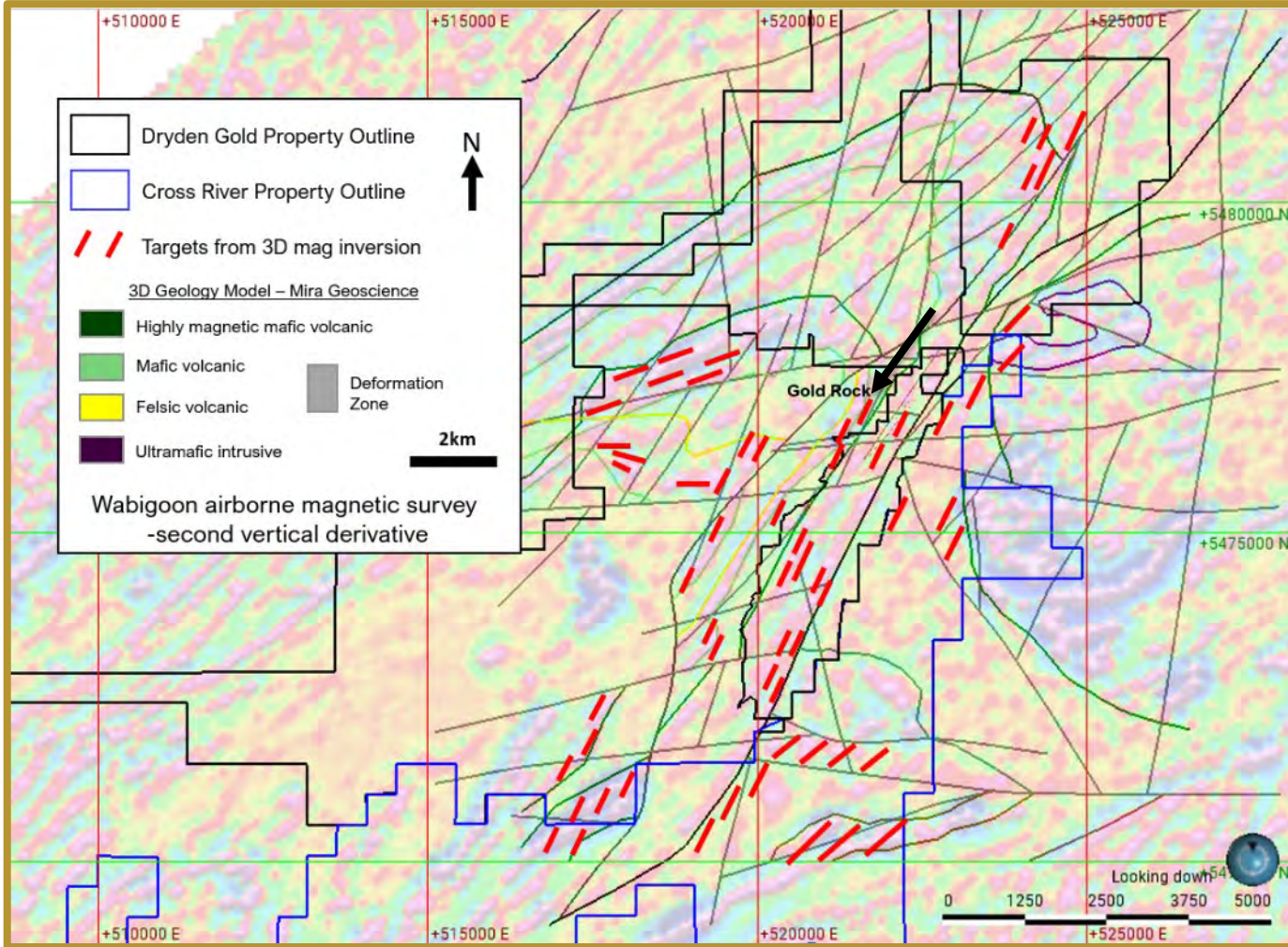
- ▲ Gaffney – 2.4 g/t gold over 75.1 meters
- ▲ Gaffney – 5.0 g/t gold over 8.8 meters
- ▲ Sherridon – 46.0 g/t gold over 0.5 meters

### ③ Tremblay Highlights:

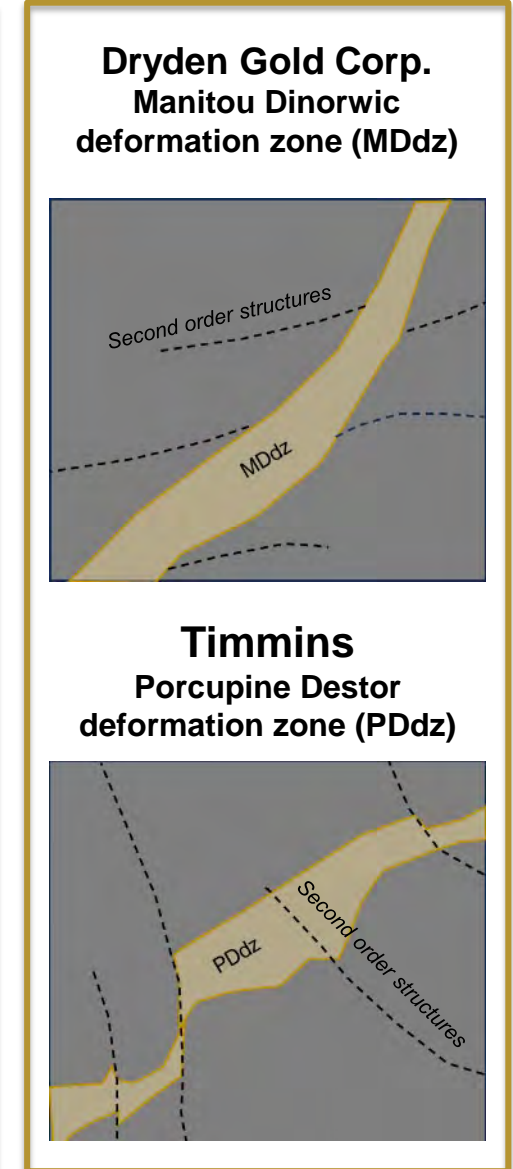
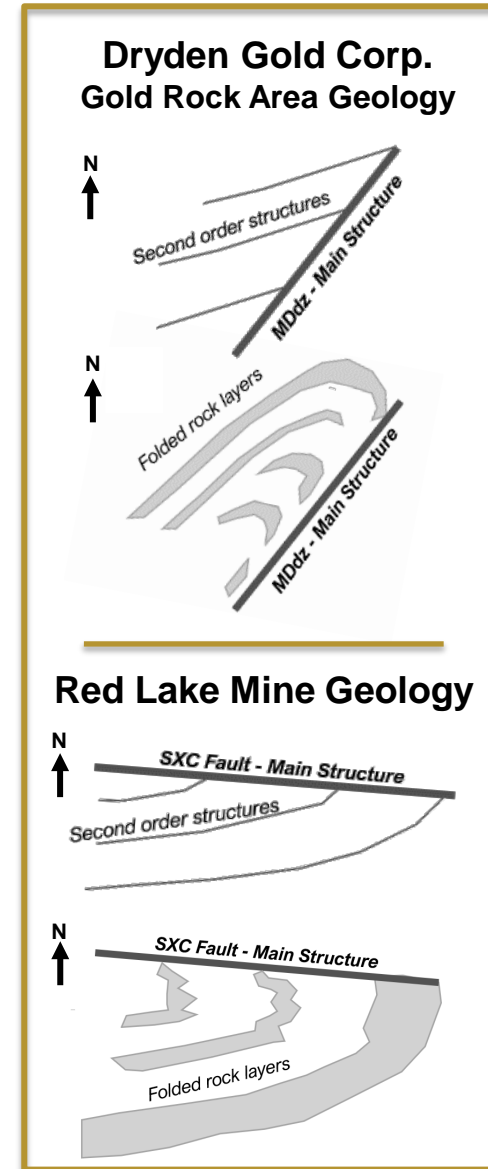
- ▲ Turtlepond - 15.0 g/t gold grab sample
- ▲ Hyndman - 13.0 g/t gold grab sample
- ▲ Avery - 24.56 g/t gold over 2.25 meters (channel sample)
- ▲ Tabor - 39 g/t gold grab sample



# Gold Rock Camp | Geology & Targets

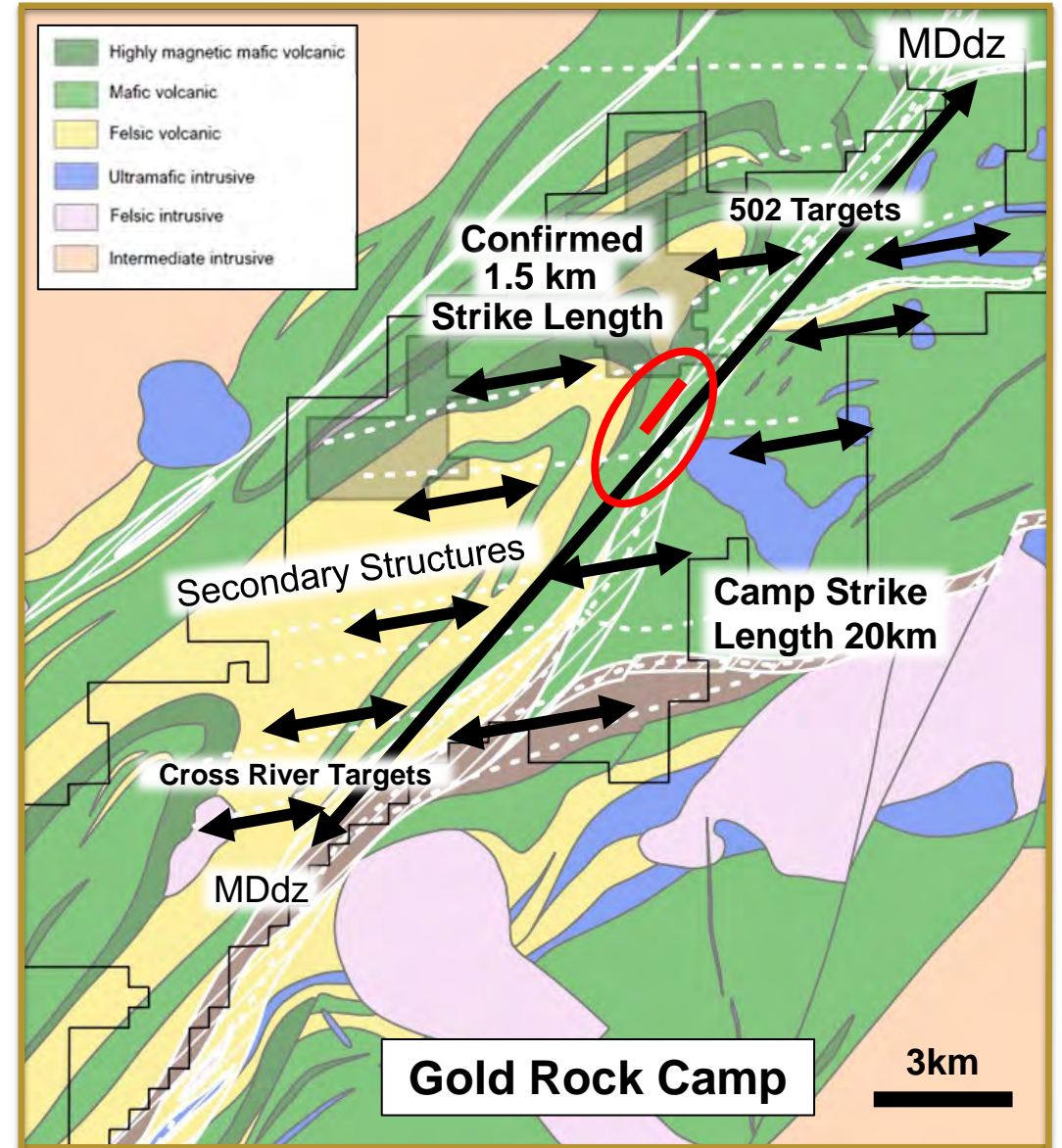


**DRYDEN**  
GOLD CORP



# Gold Rock | Near Surface High-Grade Gold

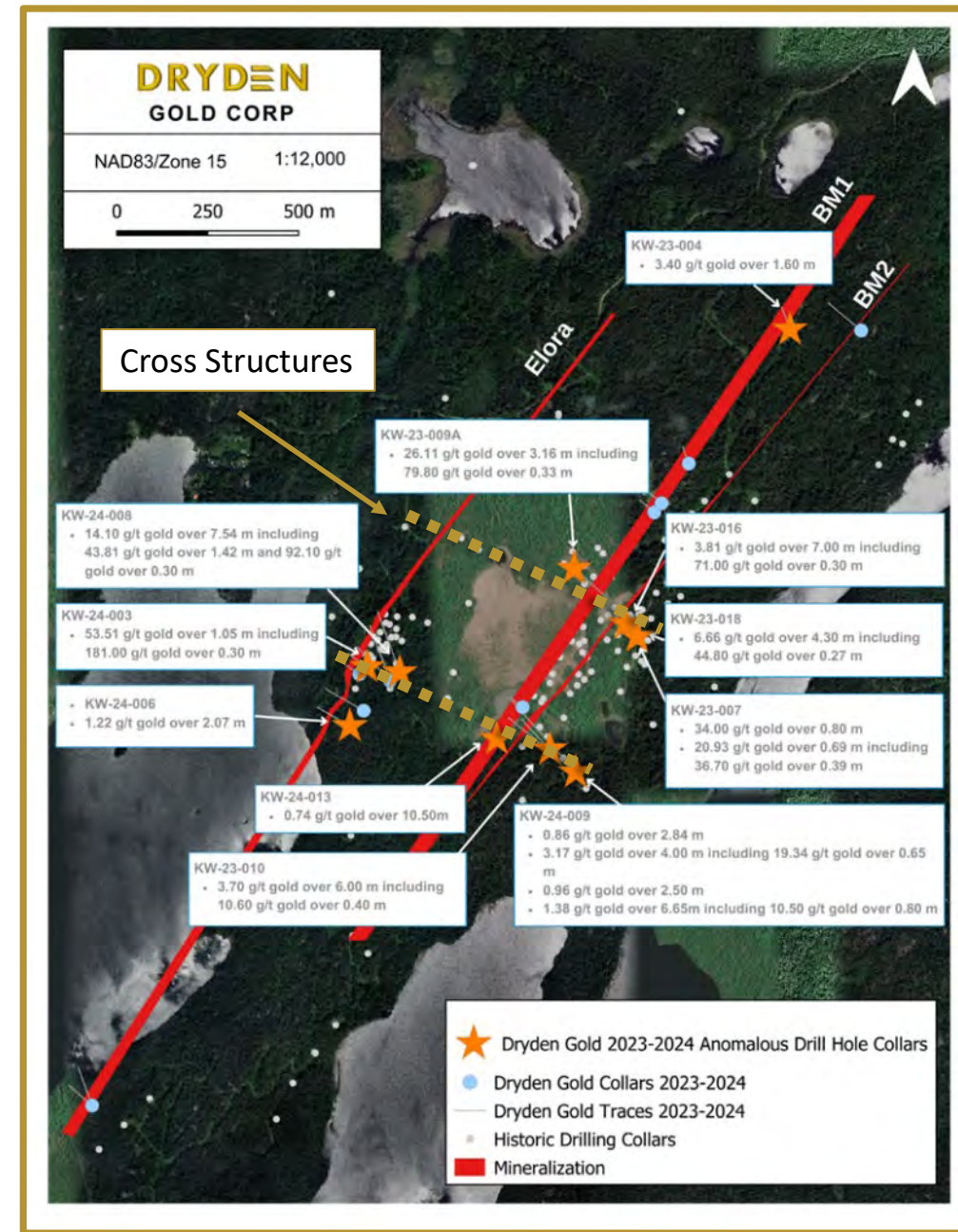
- ▲ **Brownfield opportunity** within the **Gold Rock Camp**
  - ▲ Majority of historic drilling focused on **Gold Rock Camp**
  - ▲ Historic high-grade intercepts on two gold systems
  - ▲ 75% of all historic mining occurred in **Gold Rock Camp**
- ▲ Potential for **large gold system** footprint
  - ▲ 20 km strike on MDdz structure in **Gold Rock Camp**
  - ▲ 1.5 km gold system strike **confirmed** with new drilling
- ▲ **Repeating** intersecting East-West Splay structures
  - ▲ Fault intersections are great traps for **high-grade gold** mineralization
  - ▲ Fault intersections correspond to historic gold mines and known gold occurrences throughout the **Gold Rock Camp**
- ▲ Regional folding **similar to Red Lake**
  - ▲ Fold hinges are great traps for **high-grade gold**
- ▲ **Nuggety free-gold** with excellent metallurgy



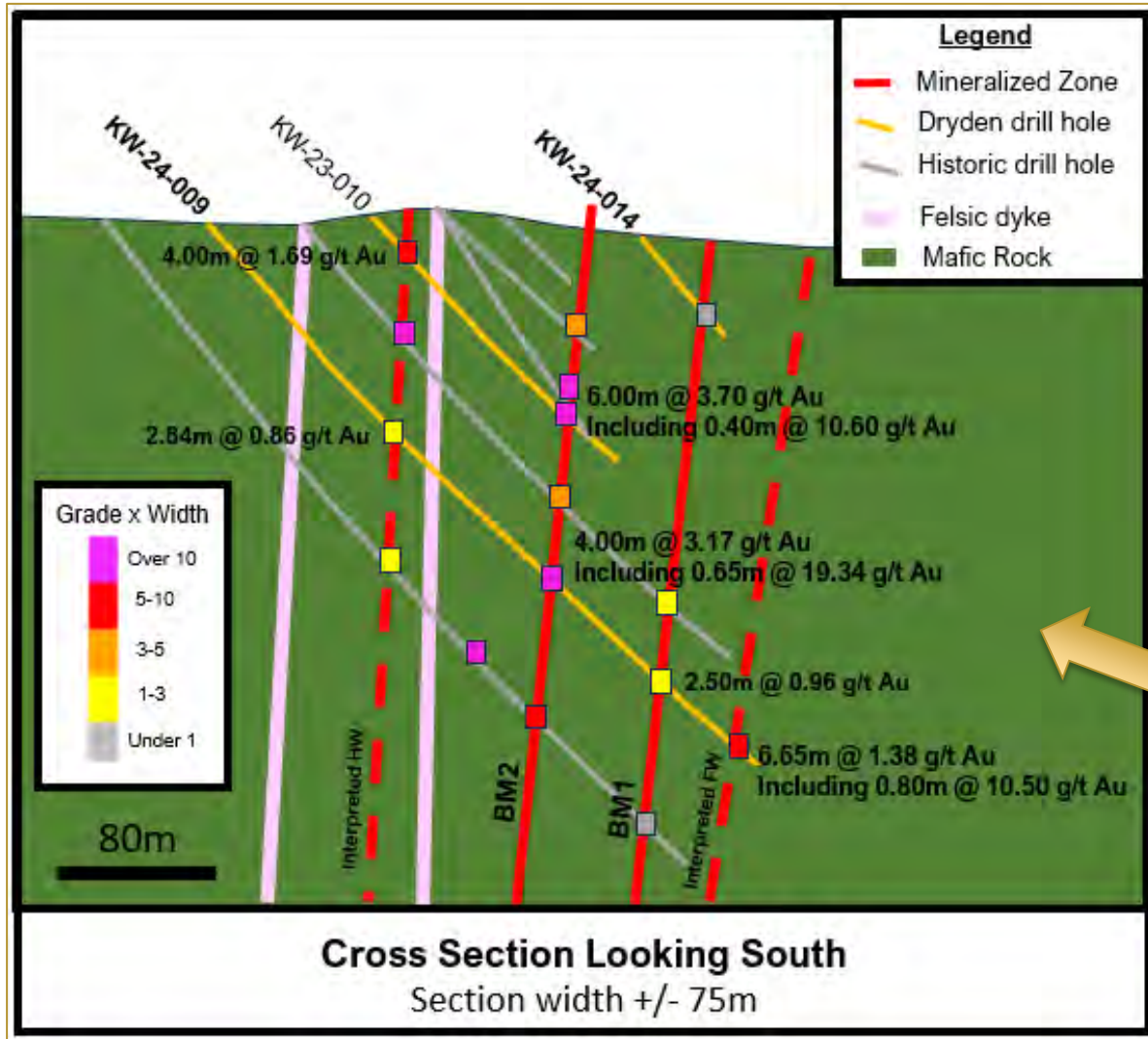


# Highlights | Spring 2024 Drilling

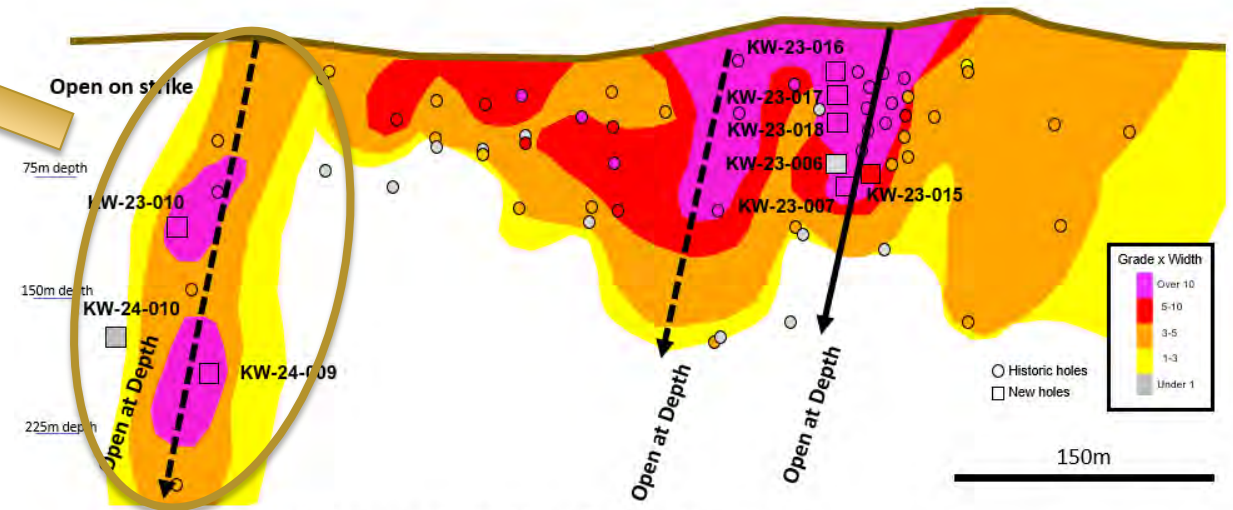
- 1 Expanded mineralized **footprint** of gold system
- 2 Confirmed orientation, structural controls and **expanded** Elora high-grade zone and **BM2** historically delineated **high-grade shoot**
  - ▲ **KW-24-008: 14.10 g/t gold over 7.54 meters, including 43.81 g/t gold over 1.42 meters and 92.10 g/t gold over 0.30 meters**
  - ▲ **KW-24-003: 53.51 g/t gold over 1.05 meters, including 181.00 g/t gold over 0.30 meters**
  - ▲ **KW-23-018: 6.66 g/t gold over 4.30 meters including 44.80 g/t gold over 0.27 meters**
- 3 Discovered **Three New high-grade shoots** mineralized footprint of gold system
  - ▲ **KW-23-009A: 26.11 g/t gold over 3.16 meters, including 79.80 g/t gold over 0.33 meters**



# What We've Learned



- ▲ This is a robust gold system with a large footprint and near-surface, high-grade gold
- ▲ Sheared basalts carrying high-grade mineralization like Red Lake Mine
- ▲ Dryden Gold intercepted significant hanging wall and footwall structures
- ▲ Previous operator did not assay hanging wall/footwall mineralization.
- ▲ Mineralization is controlled by cross-cutting structures and felsic dykes



Looking West-northwest | Contoured Long section (Grade x Thickness) BM2

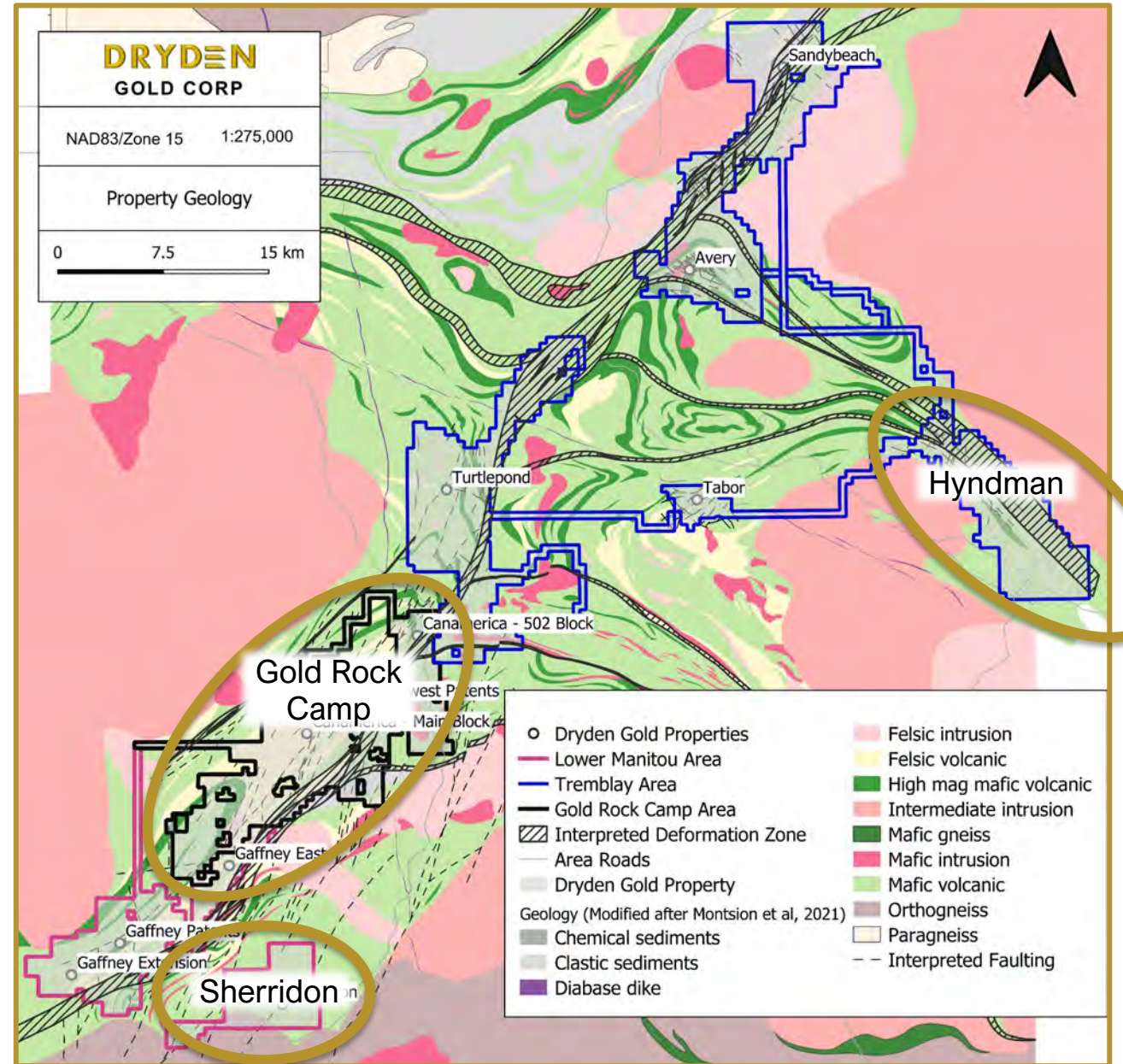
# Summer Re-logging Program

- ▲ Approximately **20,000 meters** of historic drill core was selectively sampled & securely stored (**Gold Rock, Cross River, Sherridon**, etc.)
- ▲ Re-logging select holes will **improve our understanding** of grade-thickness continuity
- ▲ The 2018 relogging program at Great Bear was instrumental in the discovery of Central LP Footwall Zone



# Summer Field Program

- ▲ Three main areas of focus: Gold Rock Camp, Hyndman and Sherridon
- ▲ Highlight – 2023 Hyndman reconnaissance program returned 4/5 samples over **10.00 g/t** gold
- ▲ Use geophysical anomalies and structural interpretation as a guide for priority field work.
- ▲ Geophysical anomalies occur over known mineralized zones
- ▲ Integrate new structural data from drill program into regional interpretation
- ▲ Targeting workshop “think-tank” with regional experts to prioritize exploration

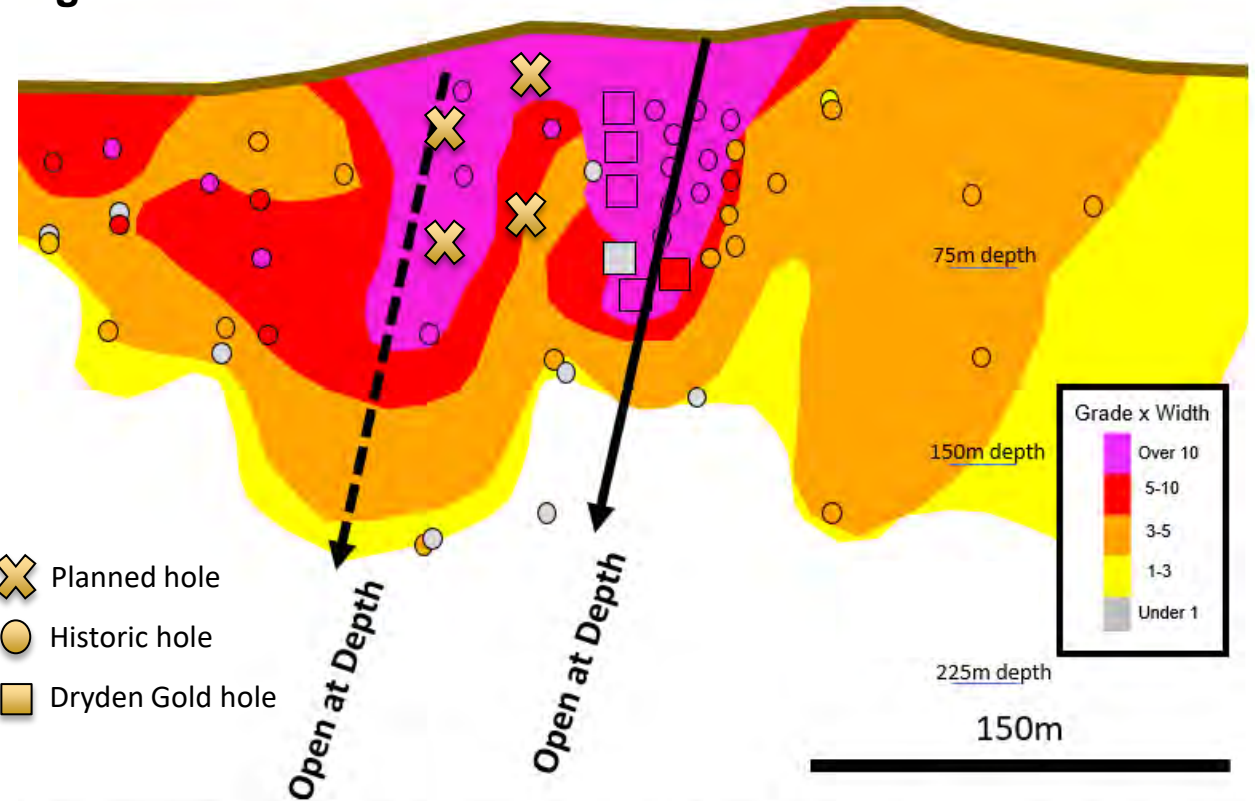
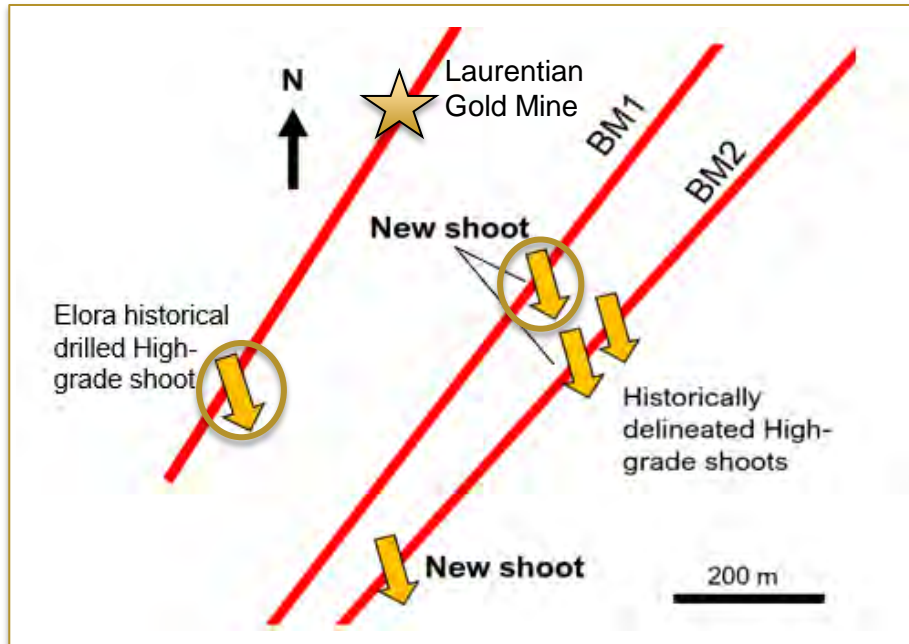


# 2024 Summer Drill Program

## Expand on New High-Grade Shoots *BM1, BM2 & Elora*

- ▲ Follow up **down plunge** extension on Elora high-grade shoot
- ▲ Follow up on the **newly** intersected high-grade shoot on BM1 (3 holes)

- ▲ Expand the historically defined high-grade shoot with only three historic drill holes
- ▲ Test continuity between the two historically defined high-grade shoots

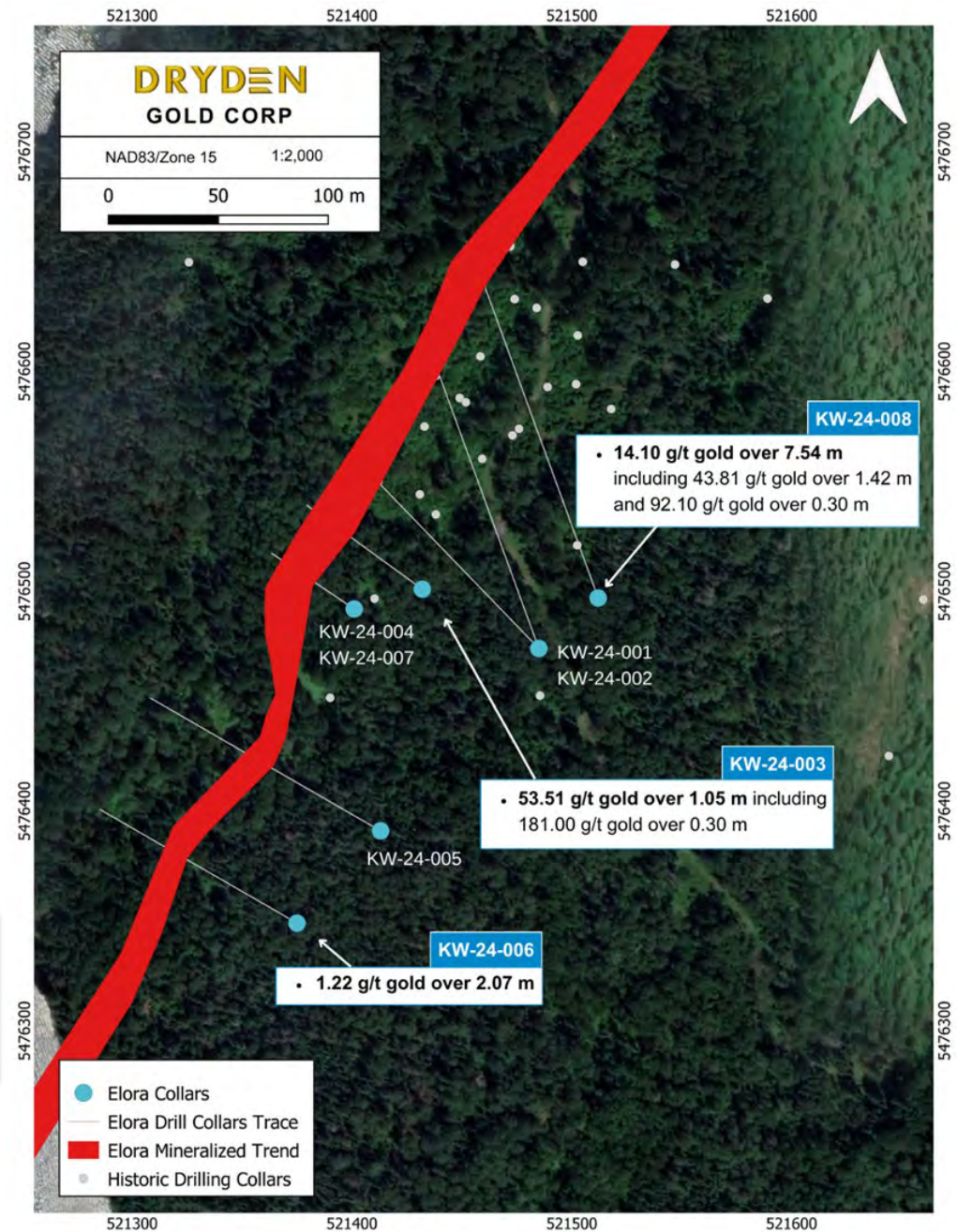
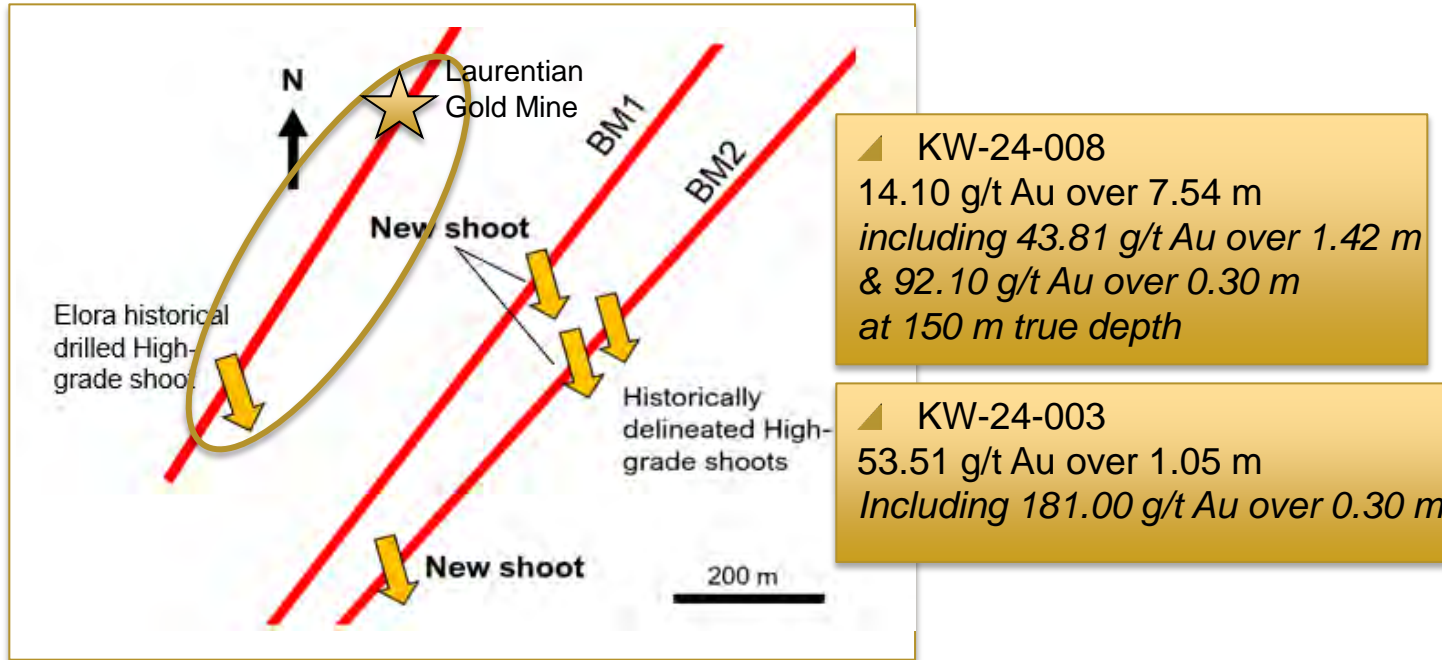


Contoured Long section interpretation Big Master Two – Looking west-northwest

# Fall Drill Program

## Expand on *Elora System*

- Elora Vein hosted high-grade Laurentian Gold Mine with average grade of 14 g/t gold.
- Geology team is working on the Exploration Permit for follow up drilling on this target.

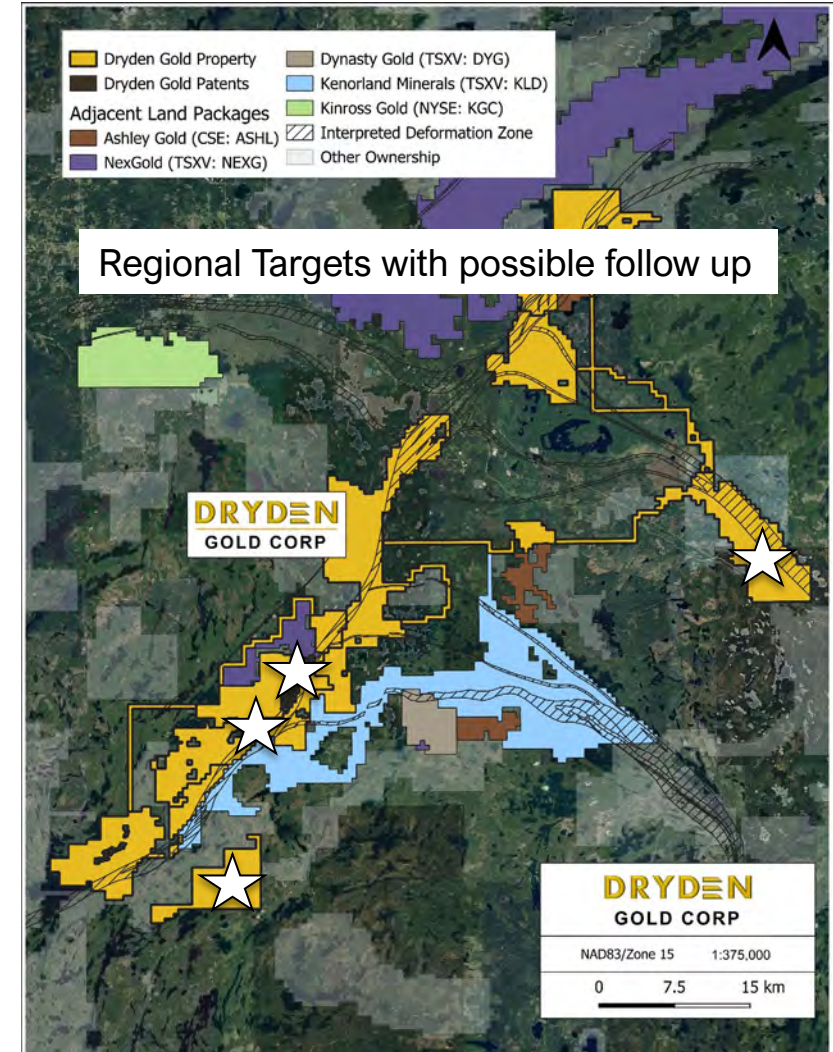
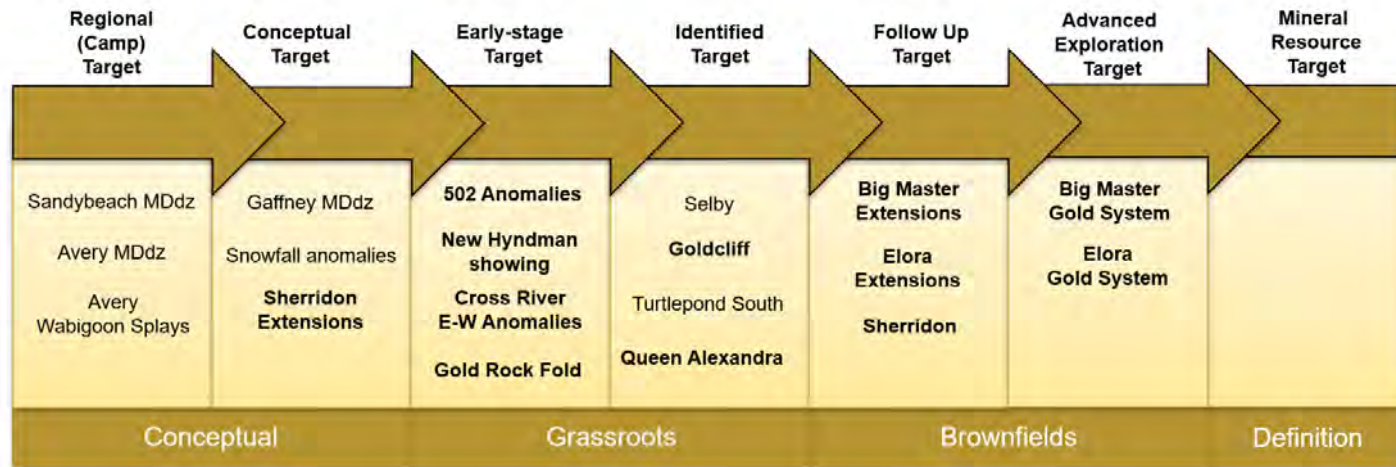


# Fall Drill Program

*Based on outcomes from Relogging and Field Program*

## Dryden Gold's Resource Pipeline

- Systematic approach to **District-Wide** exploration.
- Focusing on Gold Rock Camp **Follow-up** and **Advanced Exploration** stage targets.
- Several targets in the **Grassroots** categories will be reviewed and field tested over the summer.





# DRYDEN

## GOLD CORP

TSXV: DRY | OTCQB: DRYGF  
DRYDENGOLD.COM

### Contact:

**Trey Wasser** CEO & Director  
+1 (940) 368-8337  
twasser@drydengold.com

**Maura Kolb** President & QP  
+1 (807) 632-2368  
mjkolb@drydengold.com





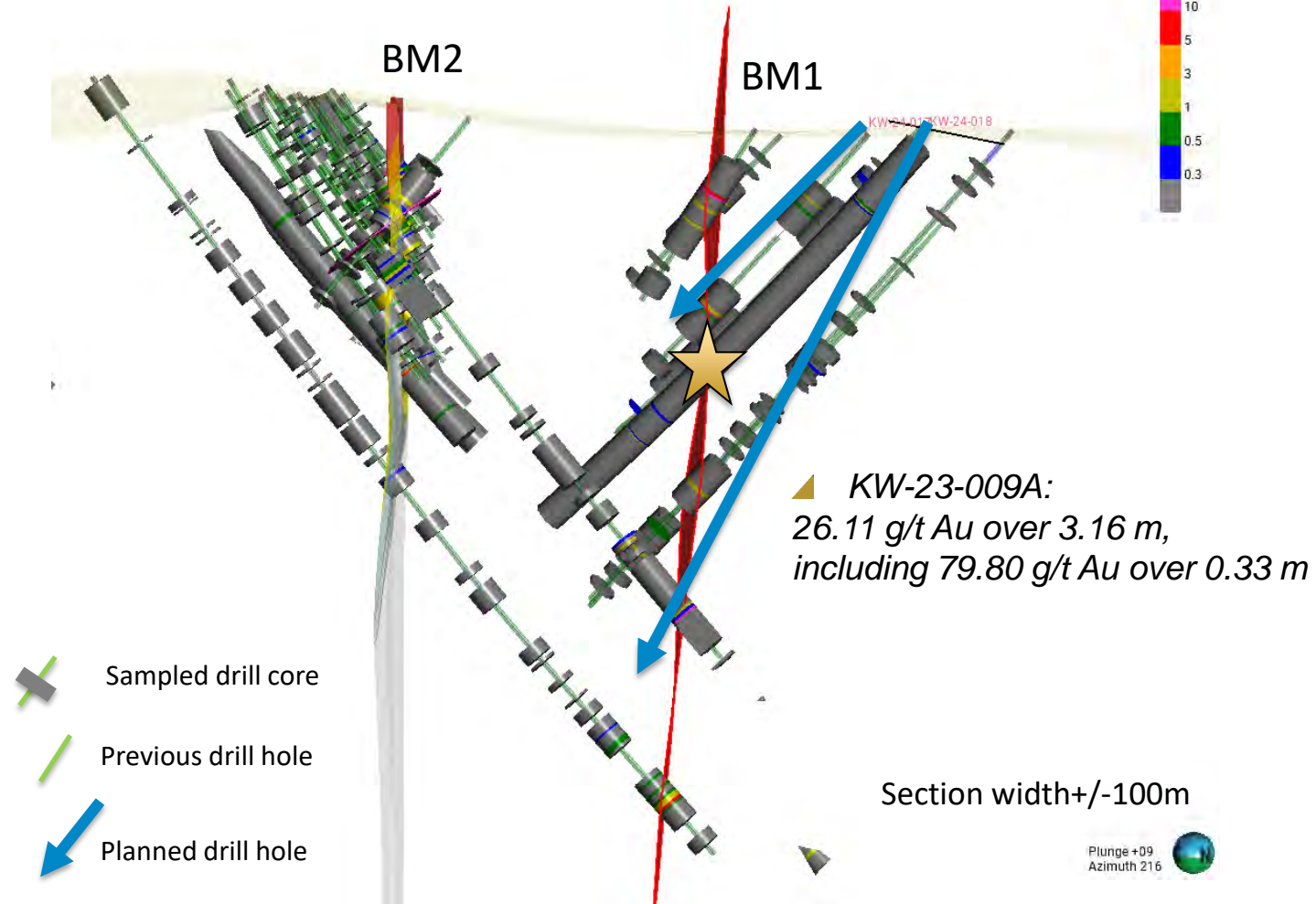
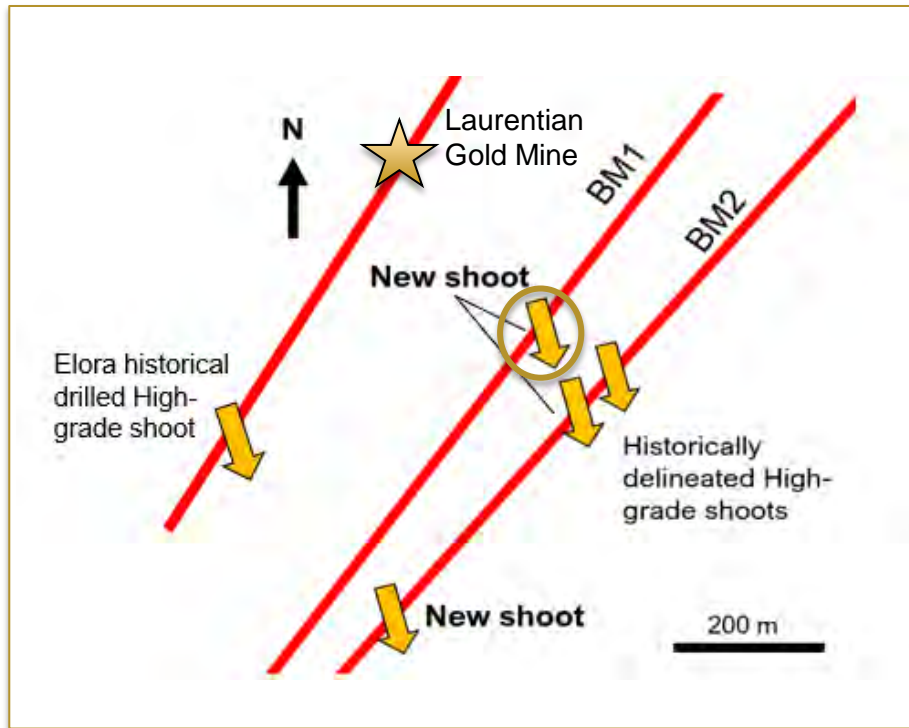
# Appendix

Digging deeper into our story.



# Summer Drill Program Expand on New High-Grade Shoot **BM1**

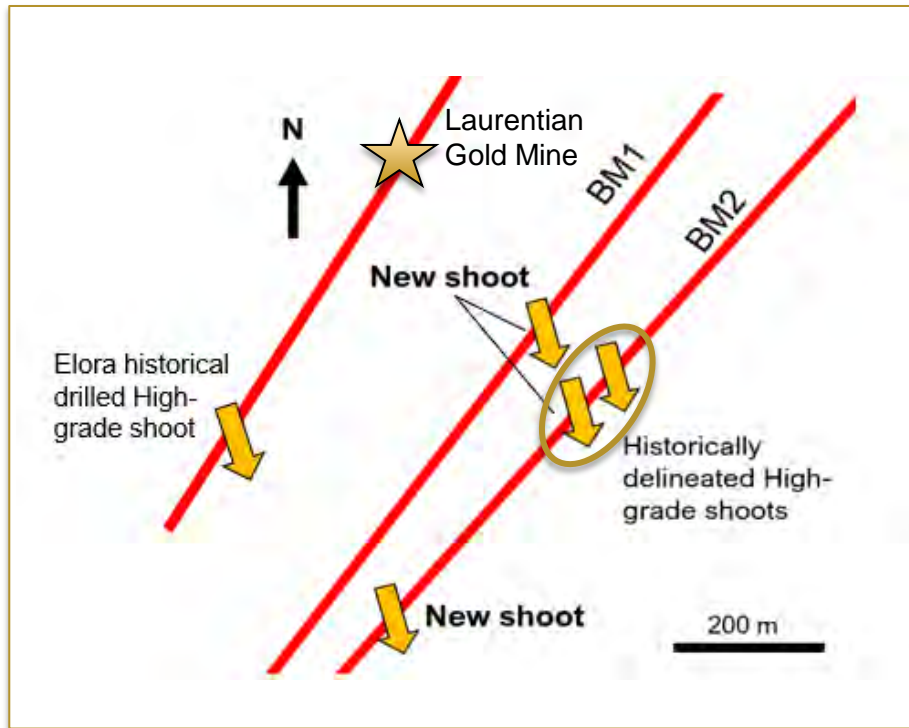
- Follow up on the **newly** intersected high-grade shoot on **BM1** (3 holes)



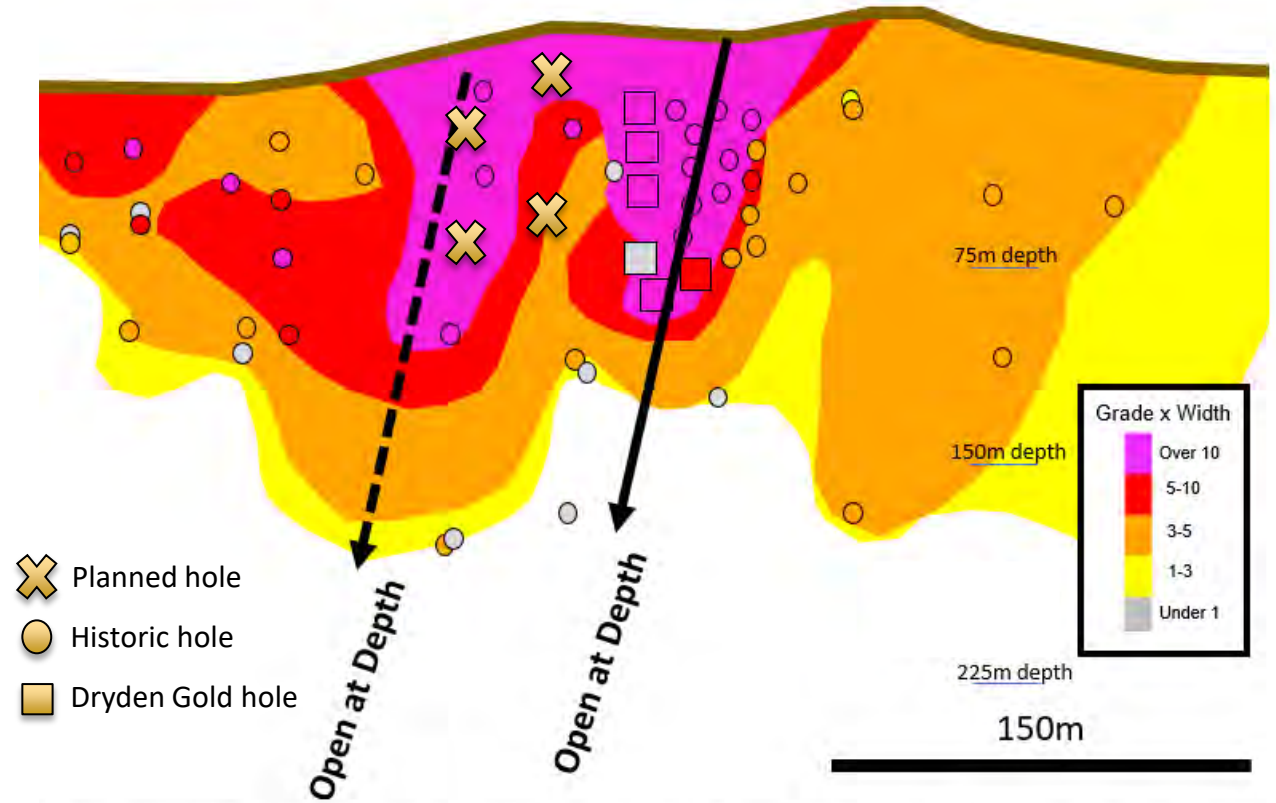
# Summer Drill Program

## Expand on Historical High-Grade Shoots

- Expand the historically defined high-grade shoot with only three historic drill holes



- Test continuity between the two historically defined high-grade shoots

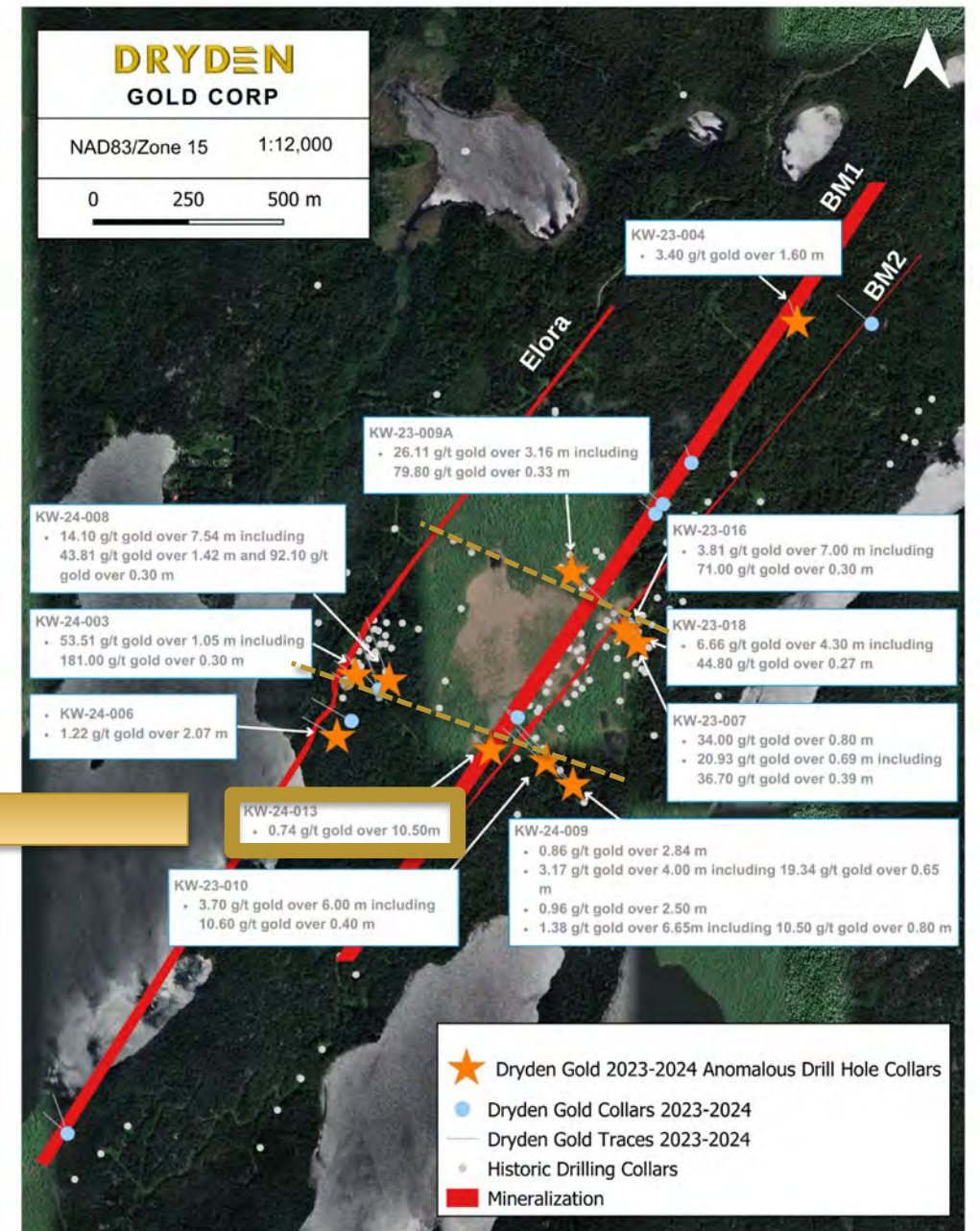
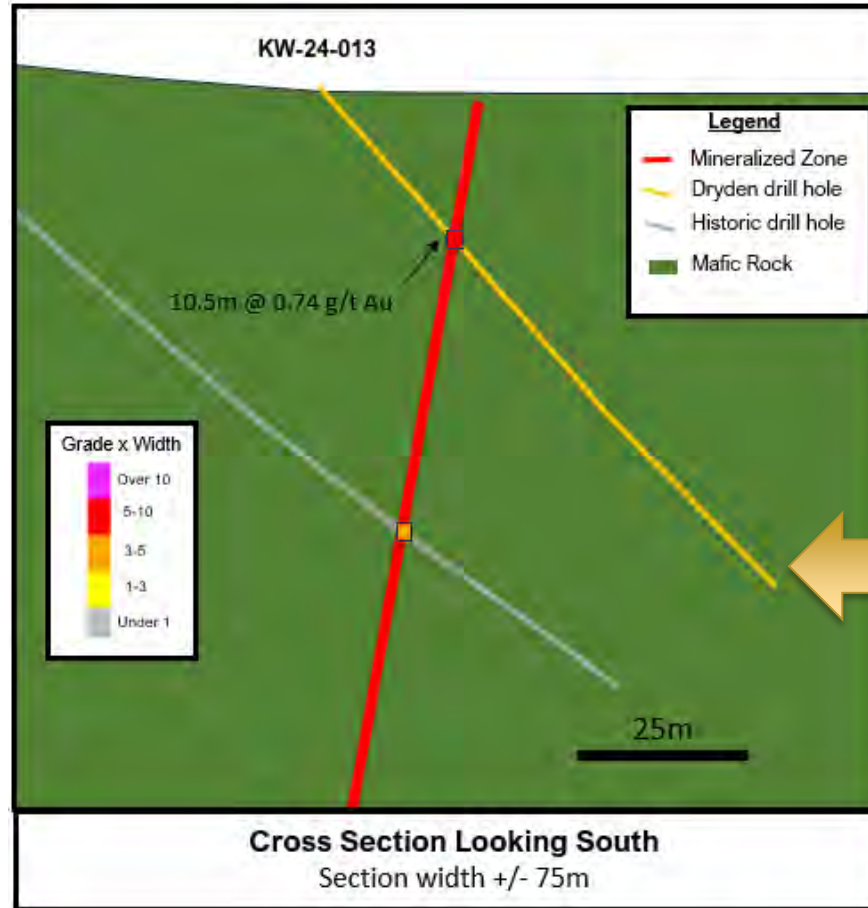


Contoured Long section interpretation Big Master Two – Looking west-northwest

# Summer Drill Program Vectoring into Mineralization

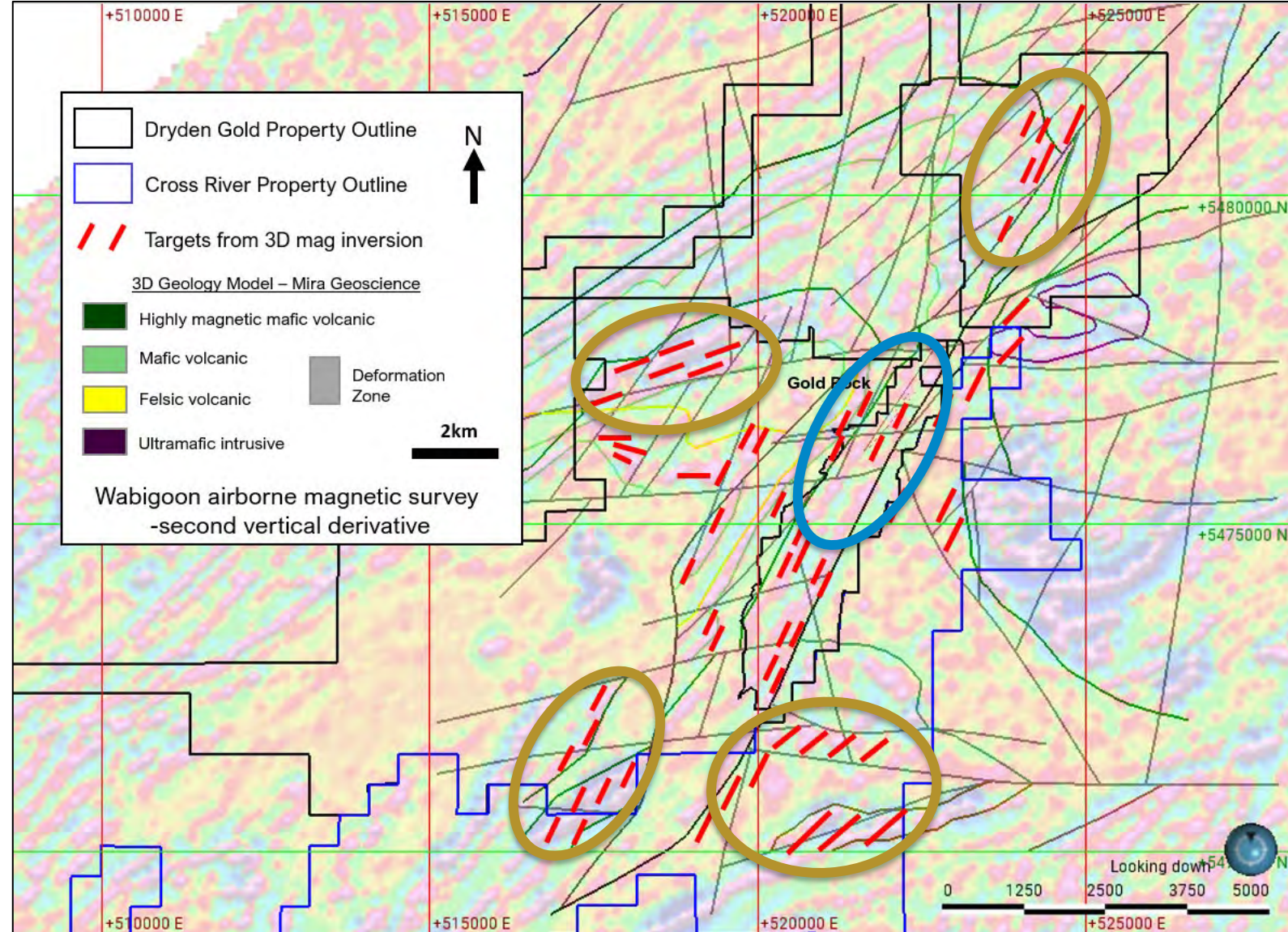
Nuggety gold systems you don't always hit the high-grade

Alteration halo around high-grade shoot ~1g/t gold



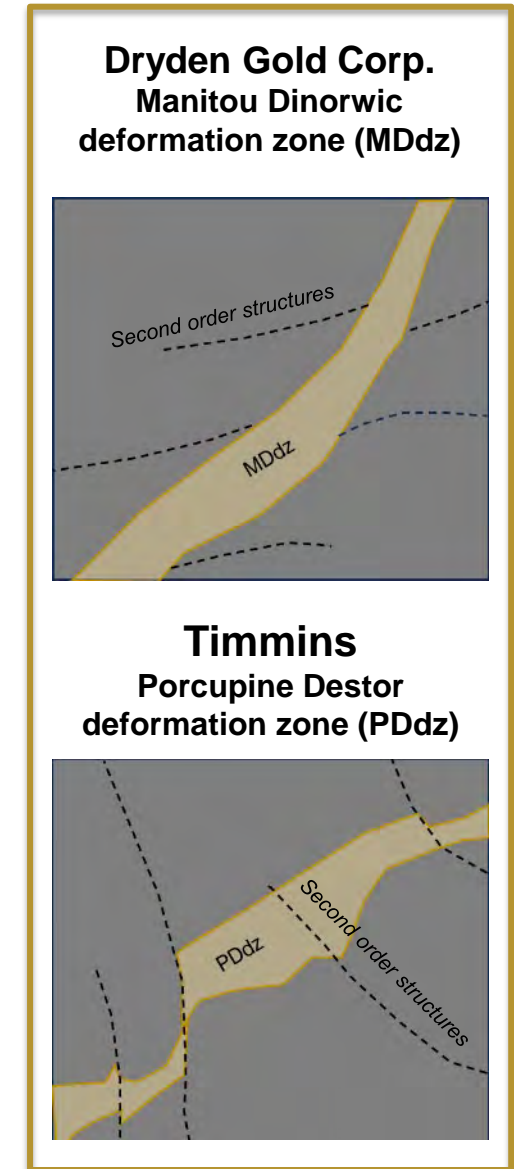
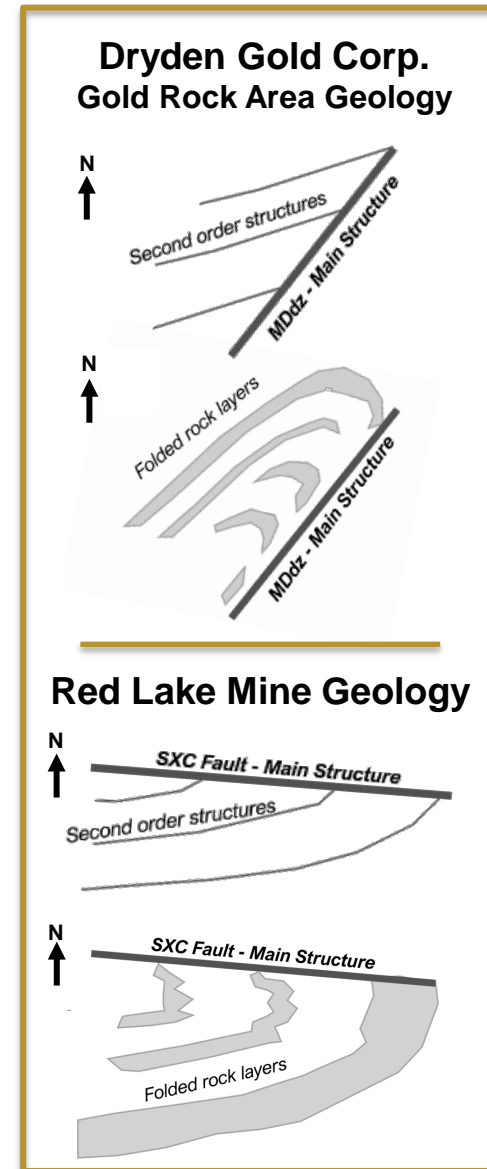
# Summer Field Program Gold Rock Camp

- ▲ Geophysical anomalies occur over known mineralized zones
- ▲ Follow up on 2023 Geophysical targets
- ▲ Integrate new structural data from drill program into regional interpretation
- ▲ Targeting workshop “think-tank” with regional experts to prioritize exploration



# Similarities to Red Lake and Timmins Camps

- ▲ Similar geological setting and rock types with regional folding. **Confirmed-** through mapping, geophysics and drilling – sheared volcanics hosting gold.
- ▲ Near surface high-grade free gold in an Archean setting. **Confirmed-** added new high-grade shoots with shallow drilling.
- ▲ Structural geometry – gold bearing *shear corridor with secondary splay structures*. **Confirmed-** that high-grade shoots related to secondary structures
- ▲ Favorable geological gold traps for high grade shoots. **Confirmed-** drilling structural intersections, shear zones and folds
- ▲ Recent study comparing Dryden Gold District to Timmins Camp.\* **Working with key researchers on 2024 summer field program**



**DRYDEN**

**GOLD CORP**

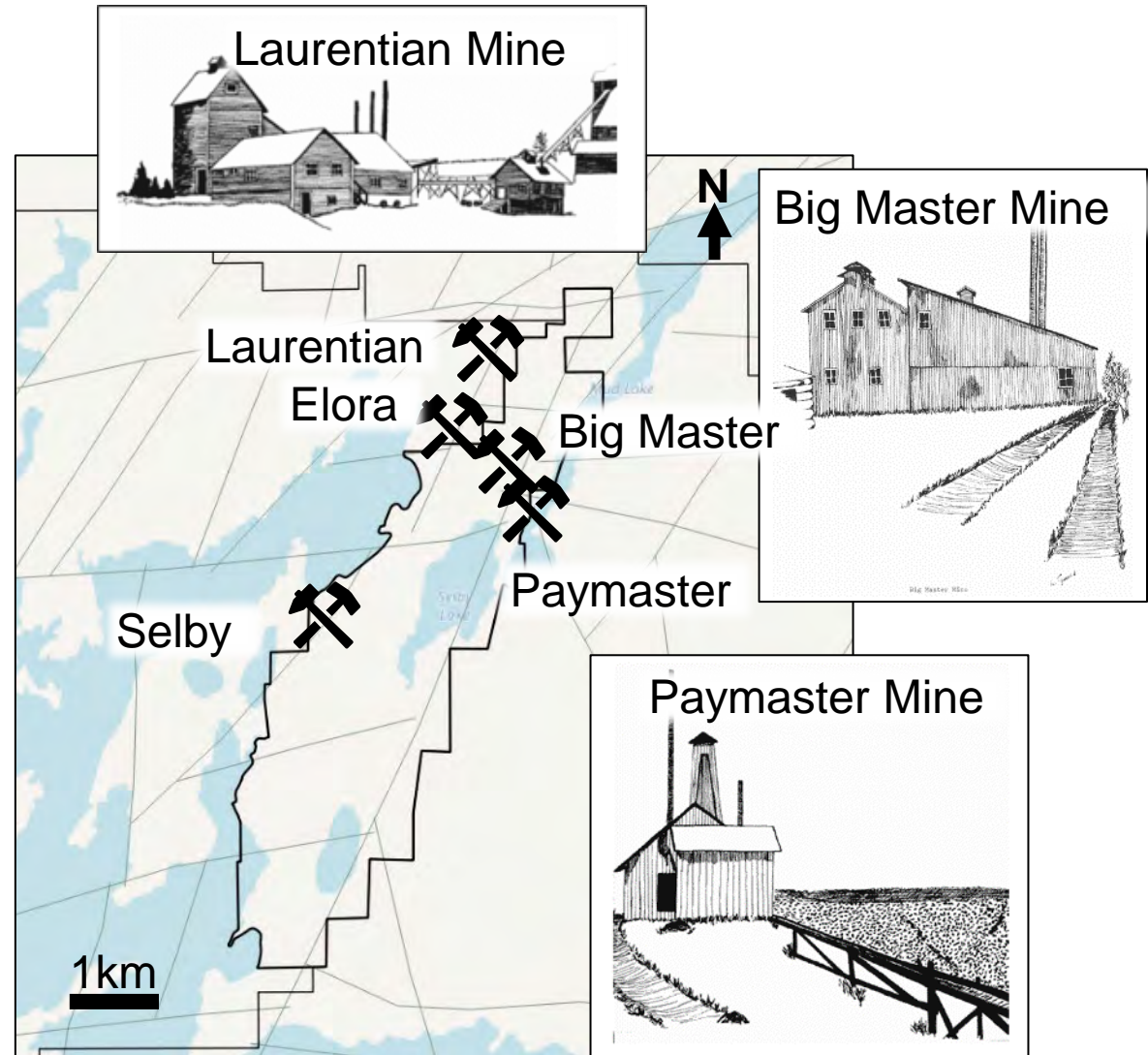
\*After 2021 Montsion et. al – simplified geology showing greenstone belt, major deformation zones and secondary structures

TSXV: DRY | OTCQB: DRYGF DRYDENGOLD.COM

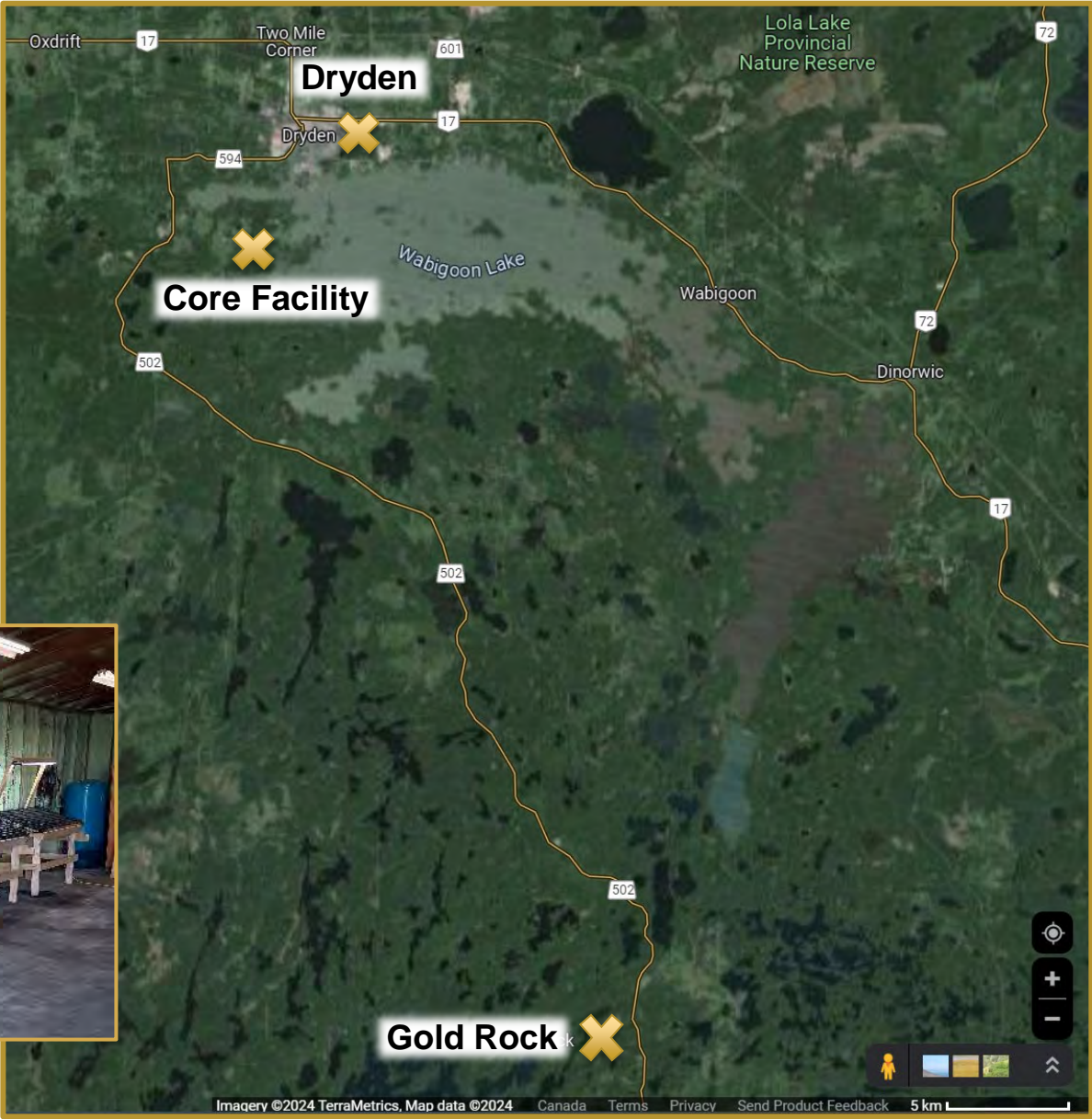
22

# Gold Rock Camp | Gold Rich History

- ▲ Mining at the turn of the century (1900's)
- ▲ Shallow historic mining ~140m depth
- ▲ ~75% of the historic mining in the district was from the Gold Rock camp
- ▲ Historic mining was designed from surface expression
- ▲ Supports the regional geology theory
- ▲ Laurentian Mine produced 20K tons of ore at .41 opt on Elora Vein



# Core Facility





# Gold Rock Camp | Bulk Sample Highlights

## HIGHLIGHTS TABLE

Single gravity separation recovered:	88.6%
Bulk cyanidation test recovery for the composite:	99.4%
Weighted average grade from total of <b>17 chip samples</b> , over <b>13.6 linear meters</b> :	40.2 g/t Au
Individual chip samples:	0.05 g/t Au - 1,070 g/t Au
Average grade from drill cuttings samples over <b>30m</b> section of the vein:	5.4 g/t Au
Individual drill cuttings:	0.02 g/t Au – 65.1 g/t Au

